



UTF53V8R Instructions

Ford F-53 – 14,000, 16,000 & 18,000 GVW
Motor Home Chassis Rear Bar

Each installation may vary due to chassis manufacturing options and variations in design. The rod assembly may be installed in several different combinations, such as either front or rear of the supplied brackets as well as using different bracket holes. The important thing is to maintain clearance between your UltraTrac and any chassis component (moving and stationary) such as exhaust, vehicle frame, differential, or any other item which might interfere with the operation of this product. Pictures and diagrams may not represent the best installation for every application.

Bolt Torque Specifications

Torque in Foot-Pounds for Inch Bolts

Bolt Size	Grade 5	Grade 8
1/4"	10	14
5/16"	19	29
3/8"	33	47
7/16"	54	78
1/2"	78	119
5/8"	154	230
3/4"	257	380



Bolt Torque Specifications

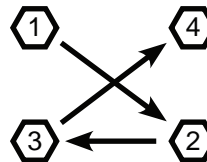
Torque in Foot-Pounds for Metric Bolts

Bolt Size	Grade 8.8	Grade 10.9
6MM	6	8
8MM	16	22
10MM	31	40
12MM	54	70
14MM	89	117
16MM	161	230
18MM	222	318

Bolt Torque Specifications

Torque in Foot-Pounds for Grade 5 U-Bolts

Bolt Size	Fine	Course
3/8"	21	18
7/16"	33	29
1/2"	52	45
5/8"	107	91
3/4"	190	165
7/8"	304	270



*Always tighten and torque u-bolts in a cross pattern sequence.

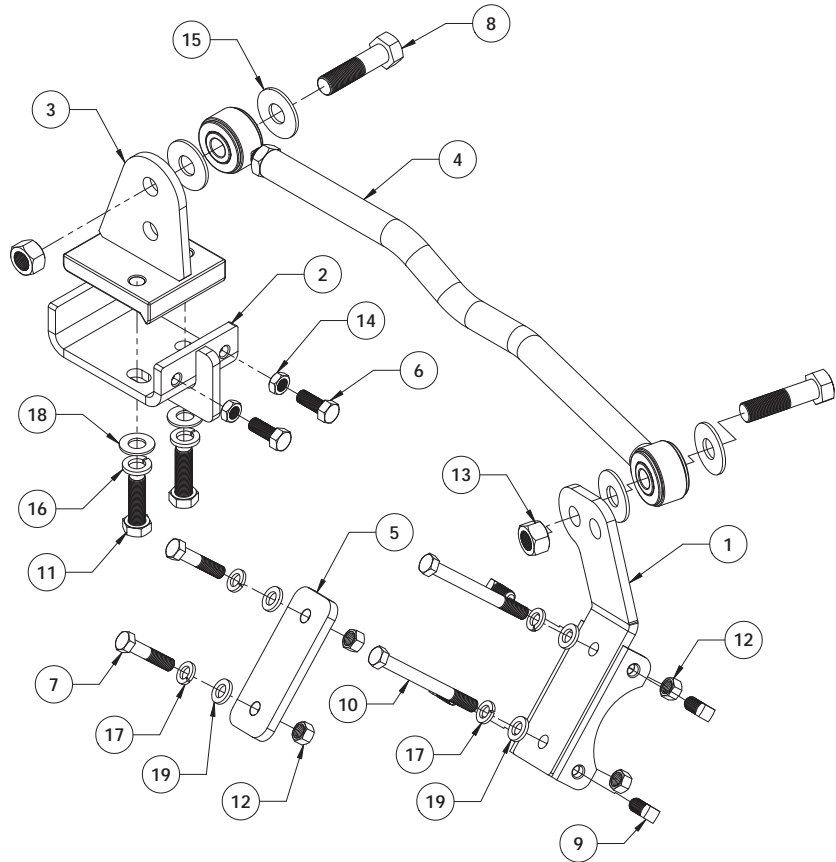
NOTICE

- Only a qualified mechanic using normal automotive tools and following all safety standards should perform the installation of this product.
- If the vehicle is equipped with air bags be sure that nothing interferes with the deployment of them.
- Be sure to use Loctite® Red on all bolts before tightening. Tighten all bolts according to the torque charts provided or to the manufacturer's torque specifications on OEM parts. If no manufacturer specifications can be found then use the torque charts provided.
- Dealer or installer be certain the user receives these instruction sheets.

Ford F-53 – 14,000, 16,000 & 18,000 GVW Motor Home Chassis Rear Bar

Tools Required

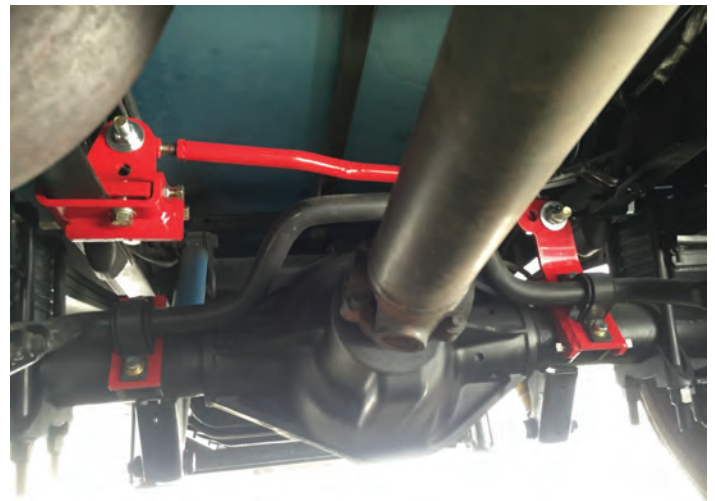
- Torque Wrench
- 1/2" Wrench
- 3/4" Socket
- 3/4" Wrench
- 15/16" Socket
- 1-1/16" Socket
- 1-1/8" Wrench
- 6" Drive Extension



Item No.	Part Number	Description	Qty.
1.....	61-6420.....	UTF53V8R Mounting Bracket Weldment.....	1
2.....	61-6745.....	UTF53V8R Frame Bracket Weldment.....	1
3.....	61-6746.....	UTF53V8R Nut Plate Frame Bracket Weldment.....	1
4.....	62-3636.....	UTF53V8R Rod Assembly.....	1
5.....	101-7117.....	UTF53V8R Spacer Plate.....	1
6.....	201-0308.....	1/2"-20 x 1-1/4" Hex Head Bolt, Grade 8, ZP.....	2
7.....	201-0467.....	12MM-1.75MM x 50MM Hex Head Bolt, 10.9 HSC.....	4
8.....	201-0632.....	3/4"-16 x 3.5" Hex Head Bolt, Grade 8, ZP.....	2
9.....	201-0816.....	1/2"-13 x 1" Square Head Cap Set Screw, Grade 8, ZP.....	4
10.....	201-0817.....	12MM-1.75MM x 120MM Hex Head Bolt, 10.9 HCS.....	2
11.....	201-0912.....	5/8"-18 x 2" Hex Head Bolt, Grade 8, ZP.....	2
12.....	202-0117.....	12MM-1.75MM Hex Nut, ZP.....	4
13.....	202-0168.....	3/4"-16 Top Lock Nut, ZP.....	2
14.....	202-0184.....	1/2"-20 Jam Hex Nut, Grade 8, ZP.....	2
15.....	203-0007.....	3/4" Flat Washer, ZP.....	4
16.....	203-0013.....	5/8" Lock Washer, ZP.....	2
17.....	203-0105.....	12MM Lock Washer, ZP.....	4
18.....	203-0106.....	5/8" SAE Flat Washer, ZP.....	2
19.....	203-0112.....	12MM Flat Washer, ZP.....	4
20.....	203-0006(not shown).....	1/2" Flat Washer, ZP.....	4
21.....	190-0155(not shown).....	10"-5/8" Wire Loom.....	1
22.....	290-0275(not shown).....	7.6" 50lb Cable Tie.....	2
23.....	150-433(not shown).....	.5ml Capsul 262 Threadlock.....	1

Ford F-53 – 14,000, 16,000 & 18,000 GVW
Motor Home Chassis Rear Bar

1. Position the vehicle on a level surface with the front wheels straight ahead and sitting at normal ride height. Set the brake and chock all the wheels.
2. Remove and discard the 4 bolts, 2 on each side that hold the sway bar on the differential housing. On the driver's side insert the mounting bracket underneath the sway bar bracket to accept the 4 square head set-screws. Tighten the set-screws down equally until they contact the bracket that is welded to the differential. This will stop the lateral movement of the bracket. On the passenger side insert spacer plate between sway bar brackets and differential. Install bolts supplied in kit. On earlier and lighter chassis the sway bar brackets are held on with 10mm bolts. We suggest that you remove the bolts and the nuts that are tacked on the differential and replace them with the 12mm bolts that are included in the kit. On some models, 12mm bolts are used. If 12mm bolts are used, replace them with the longer bolts that are included in the kit. Tighten to 45-55 ft. lbs.
3. Install the frame bracket and pinch plate on the frame rail. The frame must be between the pinch plate and frame bracket. The frame bracket is designed to mount to the bottom and the sides of the frame rail. Position the frame bracket below the frame rail on the passenger side in line with the axle bracket. Align the slotted holes in frame bracket with threaded holes in pinch plate. (Place the nut plate with lip facing down and towards the center of the vehicle). Install (2) 5/8"x2" fine threaded bolts, (2) 5/8" lock washers & (2) 5/8" flat washers. Tighten "just snug" for now.
4. Install the rod assembly onto the axle bracket with one (1) 3/4"-16 x 3" bolt, two (2) 3/4" flat washers and a 3/4" lock nut. Be sure the flat washers are on either side of the urethane bushing. Position the frame bracket so it is straight with the axle bracket and rod assembly. Adjust the length of the rod assembly until you are able to pass a bolt thru both the rod assembly and frame bracket. Install a 3/4" bolt, two (2) flat washers and a 3/4" lock nut into the rod assembly and frame bracket. Leave all bolts finger tight for now.
5. Once the frame bracket is straight with the rod assembly and axle bracket, alternately tighten down the 5/8" bolts on the frame bracket and torque to specifications. Then torque the 1/2"-20 x 1-1/4" bolts to the frame and tighten the jam nuts.
6. Torque the 3/4" bolts in the rod assembly to specifications. Inspect for any wiring or hoses that may rub against the brackets and secure in a safe position with the loom and/or cable ties provided.



Brazel's RV Performance
3912 Harrison Ave.
Centralia, Wa 98531
Phone: (360) 736-9494 • Fax: (360) 736-9497
www.brazelsrv.com