



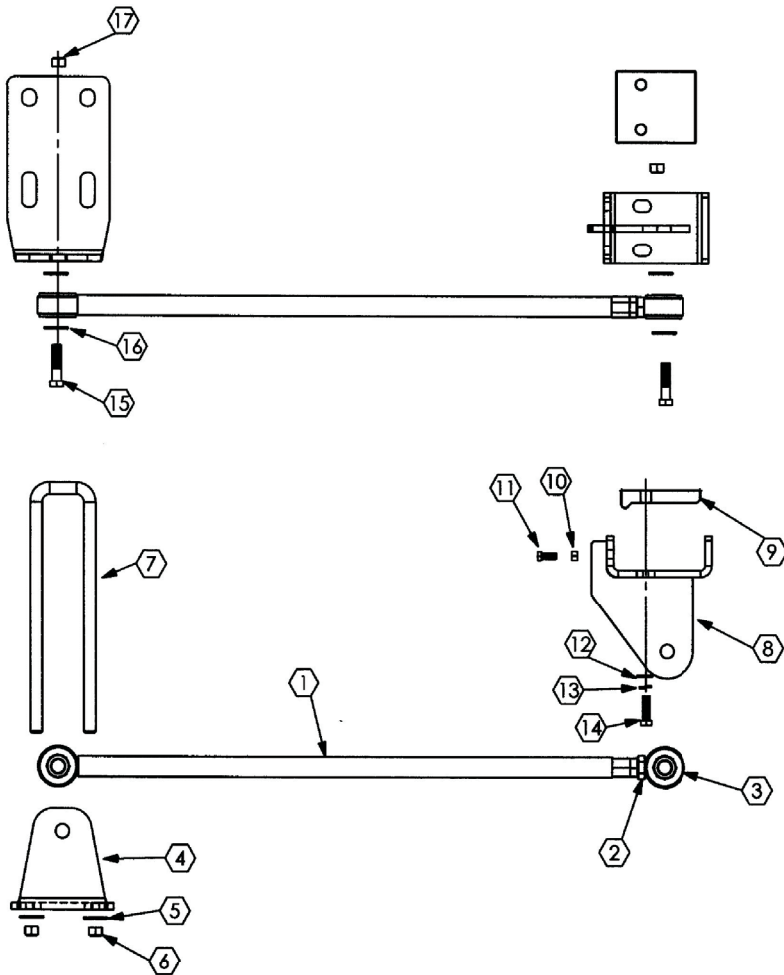
Installation Instructions for SS300U & SS301U Rear Trac Bars

This product is designed to eliminate the side shift of the rear axle on Chevrolet/Workhorse P32 chassis with rear disc brakes (SS300U) and the P30 chassis with rear drum brakes (SS301U). Exhaust must exit in front of the rear axle. If not the SS300TP Tail Pipe Kit is needed.

Installation time is 1-2 hours

*A qualified mechanic using normal automotive tools and following all safety measures known should perform installation of this product. Components are shown below:

SS300U/301U Trac Bar Parts Layout



ITEM #	DESCRIPTION	QTY
1	SS300U-1 ROD ASSY	1
2	JAM NUT – 3/4 16UNF	1
3	ROD END ASSY	1
4	AXLE BRACKET SS300U-2 FOR P32 (DISK REAR) SS301U-2 FOR P30 (DRUM REAR)	1
5	FLAT WASHER 3/4" FOR P32 (DISK REAR) 5/8" FOR P30 (DRUM REAR)	4
6	TOP LOCK NUT 3/4" 16 UNF FOR P32 (DISK REAR) 5/8" 16 UNF FOR P30 (DRUM REAR)	4
7	U-BOLT SQ. TOP 3/4" FOR P32 (DISK REAR) 5/8" FOR P30 (DRUM REAR)	2
8	SS300U-3 FRAME BRACKET	1
9	48020 NUT PLATE	1
10	NUT – 1/2" 20 UNF	2
11	BOLT – 1/2" X 1 1/4" 20 UNF	2
12	FLAT WASHER – 5/8"	2
13	LOCK WASHER – 5/8"	2
14	BOLT – 5/8" X 2" 18 UNF	2
15	BOLT – 3/4" X 3" 16 UNF	2
16	FLAT WASHER – 3/4"	4
17	TOP LOCK NUT – 3/4" 16 UNF	2

ITEM #	TORQUE (FT-LBS)
2	100-120
6	140
10	35
11	50
14	75-95
15	150-180

Installation Instructions

for SS300U & SS301U Rear Trac Bars

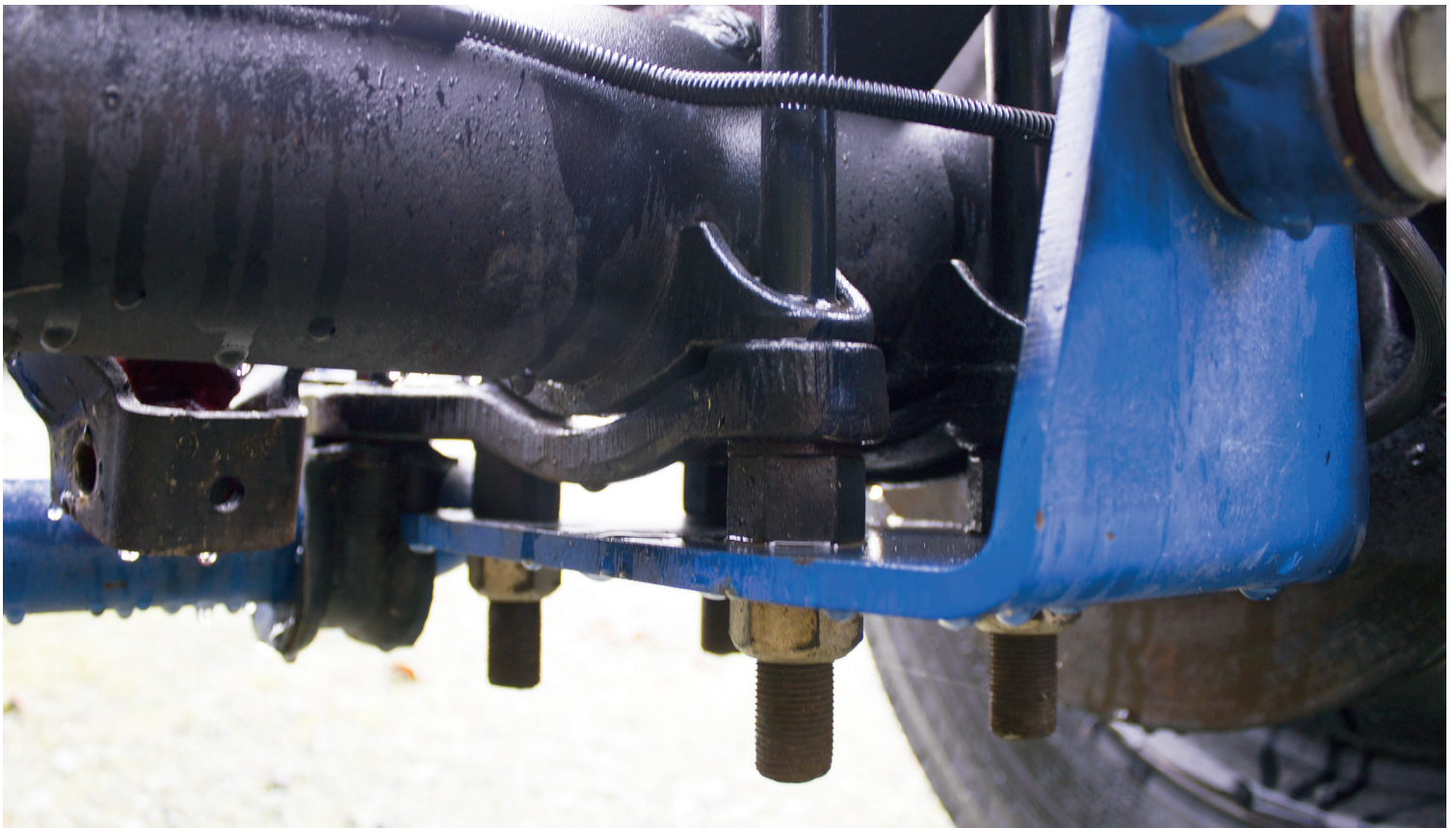
- Some parts are slightly modified per application; principle is still the same. Some exhaust modifications may be necessary. Exhaust should exit ahead of rear wheels to provide adequate clearance.
- The SS300TP Exhaust Kit is available to relocate exhaust line for proper clearance.
- The SuperSteer® SS300U/301U Rear Trac Bar is designed to be mounted with the axle bracket on either the driver or passenger side with the frame bracket on the opposing side of the axle bracket. Typical installations have the axle bracket placed on the passenger side with the frame bracket on the drivers side.

A. Preparation

Move the coach to a level, flat surface. If necessary, drive the rear wheels of the coach onto 4" high blocks and set the brakes or you may drive the coach over a work pit and chock the front wheels. Block off adequate space at the rear of the coach to work.

B. Installation of the Axle Bracket

Measure U-Bolt length extending past the OEM nuts, which should be at least 1 ½" long. If the Ubolts are of this length, do not remove the four (4) nuts on the rear axle U-bolts. Check the torque (180-200 Ft/ Lbs) and apply the axlebracket onto the U-bolts to verify enough threads to install the nuts. Attach the axle bracket with supplied lock-nuts and washers. Torque to 140 ft. lbs. U-bolts **must** protrude through the lock-nuts by at least two threads. If U-bolts do not protrude through the lock-nuts by at least two threads, install the new U-bolts provided in this kit.



Installation Instructions for SS300U & SS301U Rear Trac Bars

C. Installation of the Frame Bracket

Install the frame bracket and nut plate to the frame rail. The frame must be between the nut plate and the Rear Trac Bar frame bracket. The Rear Trac Bar frame bracket is designed to mount to the bottom and sides of the frame rail. Position the bracket directly next to the rear frame cross-member (place the nut plate with lip facing down and towards center of vehicle). Make sure not to contact any wires, brake lines, etc. Install bolts through the bottom of the frame bracket and thread in to nut plate. (Use blue Locktite and tighten "just snug" for now).

Then install the jam nuts onto the ½-20 bolts and install on the frame bracket. Tighten to push the nut plate against the inside of the frame, and then tighten the bottom bolts securely. Now tighten the jam nut against the bracket to lock the ½-20 bolt from backing out.



D. Installation of Rod Assembly

Adjust and mount the rod assembly (Rear Trac Bar attaches to rear of the brackets). Install bolts, washers and nuts. (Flat washers go on each side of urethane bushings.) Torque to 150 to 180 ft. lbs.

Note: When adjusting the length of the rod assembly, it is necessary that the coach's full weight be on the suspension.



E. Torque Specifications & Follow-Up

Torque the Trac Bar jam nuts to 100-120 ft. lbs.

Note: The Rear Trac Bar should be below the rubber brake hose. Protect the brake hose with convoluted tubing to prevent rubbing and possible failure. Double-check the fasteners to make sure all are properly torqued. Test drive. Re-check torque in 6 months.

Go to SuperSteerParts.com and fill out your warranty registration.

Your comments are greatly appreciated. Please feel free to contact SuperSteer® at 888-898-3281 or e-mail at john@supersteerparts.com



A Division
of

